

[Subscribe](#)[Past Issues](#)[Translate ▼](#)[View this email in your browser](#)

CHICAGO REGION CHAPTER NEWSLETTER

HAPPENING THIS MONTH

SALON CONVERSATION: CLIMATE RESILIENCY

Thursday, April 18

5:30 p.m. - 8:30 p.m.

The Salon is a MEMBERS-ONLY EVENT.

Space is limited for each Salon location and available to members on a first-come, first-served basis.



Extreme weather events are occurring increasingly frequently, and as climate scientists warn, are likely to intensify. The aftermath is costly and regions once desirable have people reconsidering where it will be safe to live while experiencing a great lifestyle. The exodus will reshape the places left behind and the places where people move.

[Subscribe](#)[Past Issues](#)[Translate ▼](#)

Join us for an evening filled with food and dialogue on our roles to ensure Climate Resiliency.

Salon Host Locations:

- Evanston - **Sold Out**
- Hyde Park
- Lakeview
- Lincoln Park - **Sold Out**
- Uptown - **Sold Out**
- West Town

If you are interested in being added to the waitlist for one of the sold-out Salon locations, please email us at support@laichicagoregion.org.

Dinner will be catered. You are welcome to bring the beverage of your choice to your host's home.

[Buy Your Ticket!](#)

THANK YOU TO OUR 2024 SALON SPONSORS



EVERSHEDS
SUTHERLAND

[Subscribe](#)

[Past Issues](#)

[Translate ▼](#)



SHERIDAN PARK CONSULTING

UPCOMING EVENT

MAY LUNCHEON: MIGRANT HOUSING CRISIS

Wednesday, May 15
11:30 a.m. - 1:30 p.m.

Maggiano's Little Italy
516 N. Clark Street
Chicago, IL



**Lesley Showers, Executive Director,
Institute of Cultural Affairs**



**Mary Meg McCarthy, Executive Director,
Heartland Alliance's National Immigrant
Justice Center**

[Subscribe](#)[Past Issues](#)[Buy Your Ticket!](#)[Translate ▼](#)

MEMBER NEWS

MARCH 2024 CHAPTER LUNCHEON DISMANTLING PRESERVATION'S CULTURE OF PRECIOUSNESS

Thank you to our March Luncheon program speaker, Bonnie McDonald, President & CEO, Landmarks Illinois.



Subscribe

Past Issues

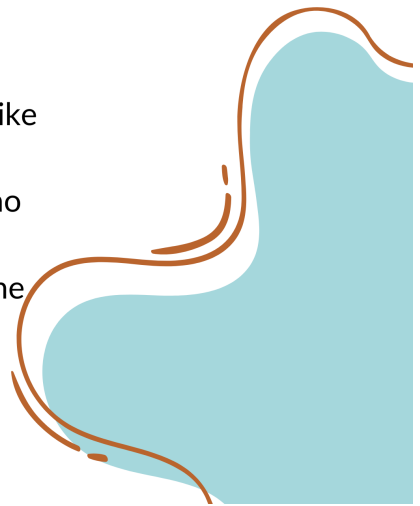
Translate ▼



[Subscribe](#)[Past Issues](#)[Translate ▼](#)

Thank You To Our Volunteers!

The LAI Chicago Region Chapter would like to take this time to share its immense gratitude to the dedicated volunteers who create all the programs and events that members and guests enjoy throughout the year. Thank you for your time and commitment!



NEW MEMBER NOMINATIONS

New Member Nominations Are Open!

The deadline to submit is 5:00 PM on Friday, May 17.

[Subscribe](#)[Past Issues](#)[Translate ▼](#)[Click Here For Details](#)

LAI Chicago Region Chapter of Lambda Alpha International annually invites nominations for new members and annually initiates a class of highly accomplished leaders who represent the diverse professional disciplines related to land economics. To this end, the LAI Chicago Region Chapter seeks members who will be active in the organization and willing to contribute to our professional community. We continue to work towards a chapter membership that reflects racial, ethnic, and gender diversity.

Please click on the button above to learn more and to access the online application forms for you, the sponsor/cosponsor, and the link to the applicant form.

MEMBER HONORS & AWARDS



[Subscribe](#)[Past Issues](#)[Translate ▼](#)

in [Multi-Housing News](#) about her career, journey and reflections on building equitable and effective affordable housing partnerships.



Site design group, ltd. (site) proudly announces the elevation of fellow LAI Chicago Region Chapter member, [Rob Reuland](#) to Principal. Rob will lead the studio operations, providing oversight for project operations, team management, and project execution.

RENEW YOUR MEMBERSHIP TODAY



LAND ECONOMICS SOCIETY
CHICAGO REGION

[Subscribe](#)[Past Issues](#)[Translate ▼](#)

MEMBERSHIP RENEWAL

Please renew your membership today!

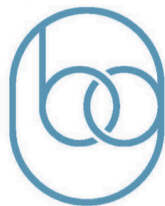
Step-by-step instructions:

1. Visit www.lai.org.
2. Top right corner, click Log In.
3. Username: [Insert member's profile email address.]
4. Password: [Insert member's password.]
5. Use the top blue button PROFILE to review the particulars and make any updates.
6. Underneath MY MEMBERSHIP heading, click the blue RENEW button.
7. This will take you through the payment process to make a credit card payment for LAI and Chicago Region Chapter dues.
8. Be sure to complete the payment process all the way through, it's a multi-page process that ends with a confirmation page.

CHICAGO REGION CHAPTER NEWS

HERO SPONSOR SPOTLIGHT

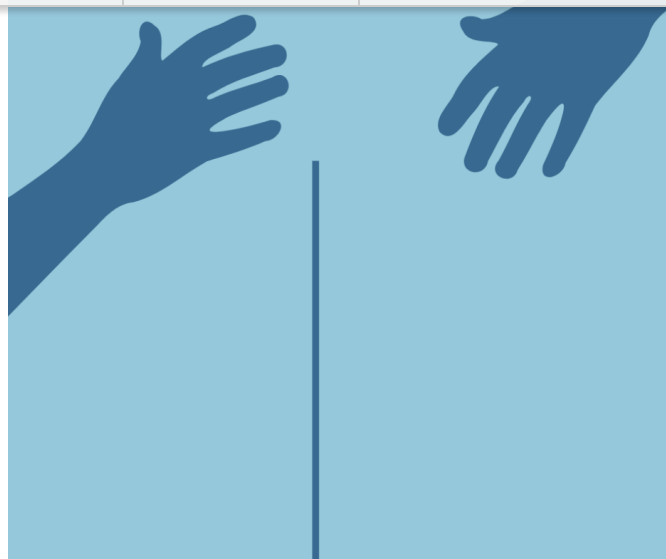
Bureau Gemmell bureaugemmell.com



BUREAU GEMMELL
ARCHITECTURE

Bureau Gemmell is a mission-based architecture and design practice. Projects are defined not by market sector but rather by their impact on communities at the micro and macro scale.

Connect with LAI member Lynsey Sorrell from Bureau Gemmell at lynsey@bureaugemmell.com.

[Subscribe](#)[Past Issues](#)[Translate ▼](#)

SERVICE DAY

We are seeking input from our members to plan for a meaningful service day experience.

You can help by sending us your ideas. If you volunteer with community nonprofit organization, let us know if you think they may be interested in working with us.

support@laichicagoregion.org

MEMBER SUPPORT FUND



Member Support Fund

The LAI Chicago Region Chapter aims to be an accessible society and, as such, this initiative is available to our members to support engagement with our programming.

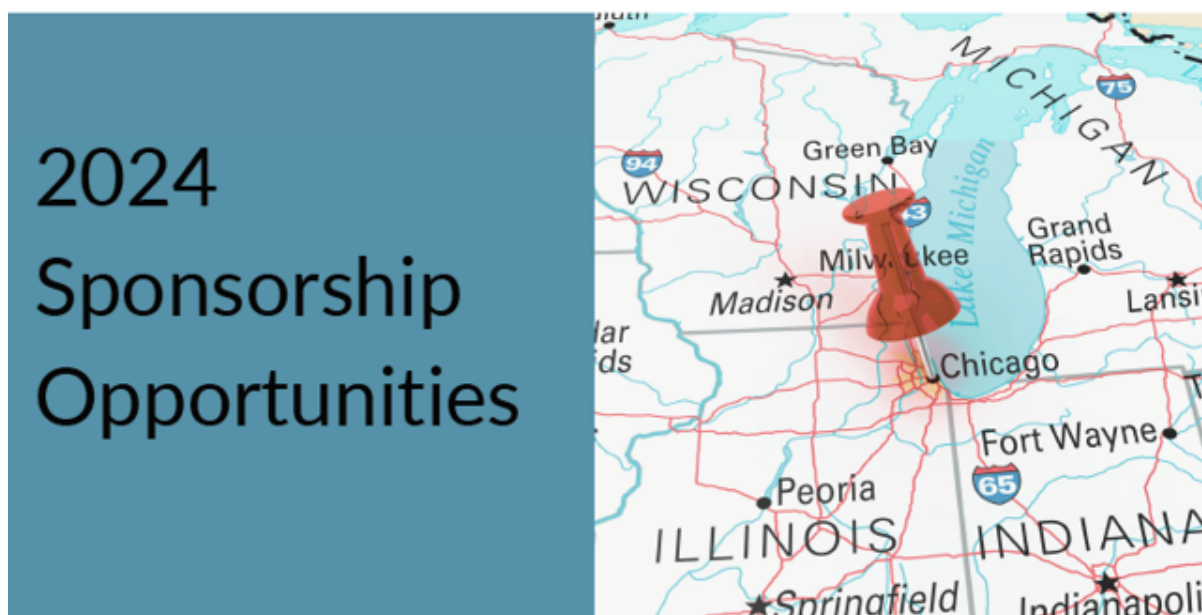
The Chapter's Member Support Fund is available to members who serve nonprofit organizations, public agencies, academic institutions, or those who are currently in a professional employment transition to help offset the cost of attendance at Chapter events and membership dues. **The goal of the fund is to make the Chicago Region Chapter activities more accessible and encourage attendance and engagement.** In some instances, guests of members may also be eligible to receive these funds.

[Click Here For Details & Application](#)

BECOME A 2024 EVENT SPONSOR

[Subscribe](#)[Past Issues](#)[Translate ▼](#)

made possible with the generous support of sponsors.



[Click Here To View The Event Sponsorship Opportunities](#)

Any Achievements Or Notices To Share?

We want to promote your professional accomplishments, speaking engagements, work projects and other news with the chapter. Information shared with us will be posted to the Chapter website, and can be sent to support@laichicagoregion.org.

Keep Your LAI Profile Up To Date

Log in to the members-only portal on the [Lambda Alpha International](https://www.lambda-alpha.org/) website to keep business and contact information up to date and to check if your dues are current.

If you need assistance, contact the Chicago Region Chapter staff at support@laichicagoregion.org or call 773.804.8592.

Follow The Chapter LinkedIn Page

As members of Lambda Alpha International, we want to share events, recognize member achievements,

[Subscribe](#)[Past Issues](#)[Translate ▼](#)[LinkedIn](#)

Check Us Out On YouTube

The Next Chapter is a new program highlighting individual chapters of Lambda Alpha International. Todd Cabanban from the Chicago Chapter interviews the presidents of each chapter to learn more about who they are and what they are doing. We hope that this video series will be a resource for membership and a way to bring this great organization closer together. Enjoy.

[YouTube](#)

**We have new addresses
where you can now find us!**

support@laichicagoregion.org<https://laichicagoregion.org>

CHAPTER SPONSORS

[Subscribe](#)[Past Issues](#)

THANK YOU TO OUR SPONSORS

[Translate ▼](#)

HERO LEVEL



CHAMPION LEVEL



ADVOCATE LEVEL



Copyright © 2024 Chicago Region Chapter, Lambda Alpha International, All rights reserved.

Want to change how you receive these emails?

You can [update your preferences](#) or [unsubscribe from this list](#).

